

# Emergency Preparedness & Evacuation Guide



## Greater Bloomfield Area

(Including, but not limited to: Lake Vera, Round Mountain, American Hill, Cement Hill, Wet Hill, Purdon, Cooper & Rock Creek)



1988 49er Fire - Good Defensible Space

# BEING PREPARED FOR AN EMERGENCY IN NEVADA COUNTY, CALIFORNIA

*(Post on refrigerator for future use. Smokey Bear magnets are available at the Tahoe National Forest Headquarters, 631 Coyote St, Nevada City.)*

## EVACUATION PLANNING

Nevada County has the potential for a number of natural disasters that you should be aware of and prepared for. Wildland fire is clearly the number one potential problem. However, a variety of emergencies including wind storms, snow storms, flooding, earthquakes, pandemic flu or acts of terrorism might necessitate an emergency response. This emergency preparedness guide is being provided to you so that you are informed and can prepare to care for yourself and your family. Emergency services will be overtaxed in all of these scenarios and may take days to mitigate every situation. In other words, you will need to be prepared to stand alone – potentially for days. Successful evacuations require good planning and coordination – amongst families, neighborhoods, communities and agencies. Start your planning now for possible emergencies in the future.

## A 4-DAY STORM EMERGENCY SURVIVAL KIT

In a large plastic container with a lid store the following items:

- A good first aid kit
- Large box of wooden matches
- One gallon supply of drinking water per person, per day (4 days)
- Camping stove with fuel (cook only in well ventilated areas!)
- Freeze-dried and/or canned food – make it a variety, with a hand can opener
- Flashlights, candles, oil lamps with lamp oil or lanterns
- Battery operated radio with extra batteries
- Items required for infants or small children such as diapers, bottles, etc.
- Cards, games, books and other things to keep your mind busy – it can get very boring!

Remember, you will still have all the amenities of your home such as warm clothes and blankets. Just think of it as “Camping at Home.”



## ANNUAL PRE-FIRE SEASON PLANNING

- Keep gutters and roofs clean of leaves and pine needles.
  - Create and maintain 100 feet (or more on steep slopes) of defensible space around your home.
  - Stack firewood at least 10 feet from house.
  - Service (top off gas) and test emergency back up generator and water pump regularly.
  - Check garden hoses and store near water faucets.
  - Check address, water supply and generator signage.
  - Check and restock emergency supplies (see storm survival kit for 4-day event below.)
  - Identify important files and personal documents for evacuation such as wills, insurance policies, stocks and bonds, passports, social security cards, immunization records, family photos, bank account numbers, or irreplaceable heirlooms.
  - Update household inventory with a video/photograph of house/personal effects for insurance annually.
  - Copy important computer files to CD and store a copy in a safety deposit box or with a friend.
  - Check flashlights and replace batteries regularly.
  - Check portable water and chemical fire extinguishers.
  - Affix wrench to gas meter for quick access to shut off gas in the event of an emergency
  - During fire season, maintain vehicles with more than a half a tank of gasoline.
  - Agree in advance what family members should do if they are away from home when the emergency strikes. Establish a meeting place away from your neighborhood to reconnect.
- Our meeting place is: \_\_\_\_\_

- If underage children will be in residence without access to transportation, create an emergency exit strategy
- Ask an out-of-state friend or relative to be your family contact. During a disaster, it is often easier to call long distance. Family members should be instructed to call this person with their location. In the event of a disaster we will call: \_\_\_\_\_

- Plan how you will care for your pets and livestock.
- Check to ensure you have adequate insurance coverage. (Contact your insurance agent with any questions.)
- Two escape routes from our home are: \_\_\_\_\_

- The following are questions to consider should evacuation become necessary: Do the roads on which you would evacuate have adequate clearance for two vehicles to pass? Are streets clearly marked in order to provide easy access for fire crews? Do you have a reflective number sign posted at the road, to direct emergency crews to your home? If not, work to rectify any deficiencies.
- Replace stored water and food at least every six months.
- Test your smoke detectors monthly and change the batteries at least once a year.
- Hold a family meeting to review your emergency plan on an annual basis.

## CHECKLIST FOR RETURNING HOME AFTER A FIRE

Unfortunately a fire has passed through your area and considerable damage has been done. To ensure your safety as you return, please keep these precautions in mind.

### When driving to your property check for:

- Trees, brush and rocks which may be weakened or loosened by fire. Trees and brush weakened by fire may lose limbs or fall. Rocks loosened by fire may roll and crumble. If rocks have rolled down a slope, expect more to follow.
- Debris or damage from fire on roads and driveways.
- Debris on the road near your home and in your driveway. Clearing the debris to the edge of your driveway and removing it later will help keep your home safe from fire.
- Utility poles weakened by fire.

### At your property, check for fire or fire damage:

- Hot embers in rain gutters, on the roof and under overhangs.
- Hot embers under decks and in crawl spaces.
- Hot embers in wood piles, debris piles and lawn.
- If well or pump-house is in working order.
- If your electrical service has not been interrupted you may continue to use your power for such things as pumping water, etc.

### If your utility services are off, check for burned service equipment and facilities:

- Is there damage to the gas meter, gas lines, or propane tank. If there is ANY visible damage DO NOT attempt to repair or turn on these services. Call your local propane or utility company for assistance.
- Look at the electric meter. If there is any visible damage DO NOT ATTEMPT to turn the breaker on. Call your local utility company for assistance.
- If there are electrical wires on the ground STAY CLEAR, CONSIDER THEM ENERGIZED and contact your local utility company immediately.

### When you have secured safety outside your home, check inside for fire or fire damage:

- Embers in the attic, which may have entered through vents.
- If electricity is off, before turning it on, check all appliances to ensure they are off. Once you are sure all appliances are turned off, there is no fire damage to your building and the meter does not have any visible damage you may turn on the main circuit breaker.
- Check if the phone is working.
- Check if security system and alarms are working.
- Use flashlights to help inspect your home and surrounding area.

### If you find any of these conditions:

**Fire** – stay away and report condition to a local fire or law enforcement official in the area or call 911.

**Damaged Utility Equipment** – report electrical problems or damaged equipment to your local utility company.

**Gas Leaks** – Report gas service problems to your local supplier.

**Other** – Report any other safety issues or emergencies to 911.

### After checking your property, continue to use caution and note outdoor conditions:

- Trees and poles with deep charring, particularly if still smoking should be considered hazardous.
- Smoldering holes in the ground can be full of hot coals.
- White ash is evidence of hot material.

## REMEMBER

Once out, you will not be allowed back into your home until the evacuation order is lifted. This is for your safety and the safety of firefighters, as well as reducing the chance of looting.

There are countless hazards during a fire or other emergency and afterwards. A few for you to be aware of are:

- Downed power lines
- Reduced visibility from smoke
- Falling trees and limbs
- Fire equipment and firefighters in the mop-up stages
- Rolling rocks on steep slopes

## ANIMAL EVACUATIONS

Again, listen to local media for the location to which animals are being evacuated. Pets/animals are not allowed at shelters except for official disabled persons' assistance animals. Owners are responsible for locating placement for pets/animals during an evacuation. If time allows for an orderly evacuation, assistance for animal evacuation and sheltering will be coordinated through the Nevada County Office of Emergency Services.

## EVACUATION DESTINATION

- Follow instructions and cooperate with emergency personnel. There are multiple community evacuation destinations to which you may be directed and the location may not be the closest to your home.
- Notify an out of area contact person to inform them of your location and status.
- Leave a note with emergency contact information on your refrigerator or kitchen table in the event emergency crews need to contact you.
- Take only essential vehicles – the more vehicles, the more congestion on the road. Larger vehicles such as horse trailers and RV's clog evacuation routes and endanger everyone's life.
- Put on long trousers, heavy shoes, cotton long sleeve shirts, gloves and scarf (no polyester – it melts.)
- Stay clear of any downed power lines and poles. Always assume they are live!

History has shown that individuals who chose to stay and fight decided way too late that they were not prepared to be a firefighter. If you are trapped by fire, please refer to the Fire Entrapment checklist on page 8.

## POSSIBLE EVACUATION CENTERS:

- Listen to local media for evacuation center destinations:*
- The Fairgrounds (unless there is a large event taking place such as the County Fair or Draft Horse Classic.)
  - Nevada Union High School.
  - The Red Cross shelter at the Baptist Church across from Nevada Union High School.
  - The Grass Valley Veteran's Hall.
  - For short duration, staging at the Horsemen's Lodge at the corner of Brunswick and Town Talk Roads.

NOTE: The above facilities are examples of possible Evacuation Center locations. The actual location will be based on location of the disaster, facility availability, and other factors. Listen via the media for the most current information.

### Resource Directory

Agencies to Assist with Fuel Reduction,  
Conservation Planning, and Emergency Response

Grass Valley Fire Department	274-4370
Fire Safe Council of Nevada County	272-1122
Nevada County Consolidated Fire District	273-3158
Nevada County Office of Emergency Services	265-1515
Nevada County Public Health, CERT Program	265-7174
Nevada County Resource Conservation District	272-3417
CALFIRE – Regional Office – Auburn	(530) 889-0111
CALFIRE – Fire Information	(530) 823-4083
Bureau of Land Management	(916) 985-4474
Tahoe National Forest	265-4531
PG&E	1-800-743-5000

### Local Radio Stations:

*Grass Valley/Nevada City Area:*

KNCO 830 AM, STAR 94.1 FM, KVMR 89.5 FM

*Truckee Area:* KTKE 101.5 FM

### Some Useful Websites:

[nccfire.com](http://nccfire.com)  
[theunion.com](http://theunion.com)      [yubanet.com](http://yubanet.com)  
[knco.com](http://knco.com)      [kvmr.org](http://kvmr.org)  
[mynevadacounty.com/emergencies](http://mynevadacounty.com/emergencies)  
[firecenter.berkeley.edu/](http://firecenter.berkeley.edu/)  
[wildlandfire.com](http://wildlandfire.com)      [fire.ca.gov](http://fire.ca.gov)  
[fs.fed.us/r5/tahoe/](http://fs.fed.us/r5/tahoe/)      [nifc.gov](http://nifc.gov)  
[cdfdata.fire.ca.gov/incidents/incidents](http://cdfdata.fire.ca.gov/incidents/incidents)  
[dial211.com](http://dial211.com)

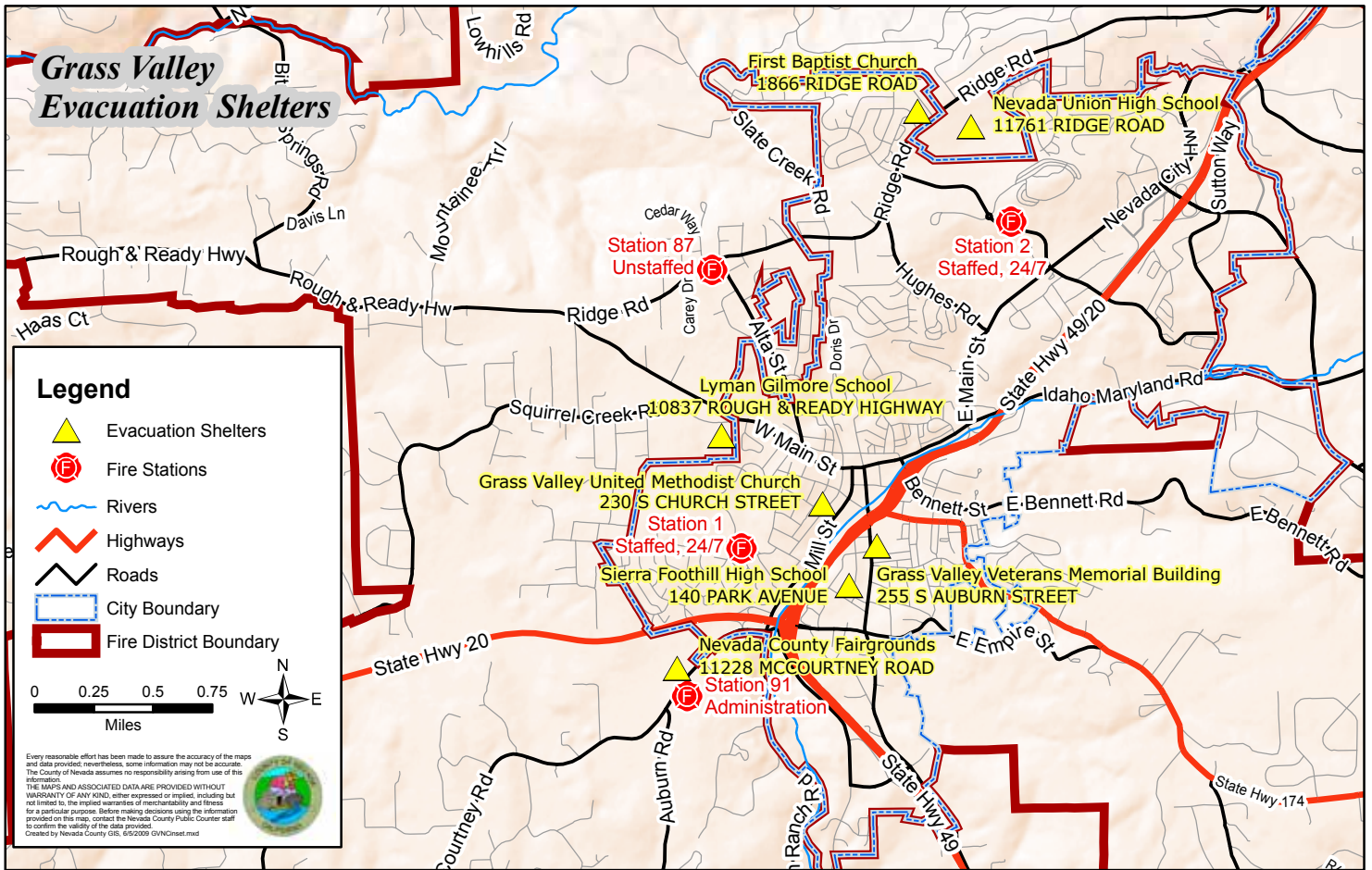
**Always remember that the primary number to call in an  
emergency only:**

**911**

**Using a mobile phone  
emergency only:**

**Fire/Medical: 1-530-477-5761**

**Sheriff: 1-530-265-7880**



## MY PERSONAL WILDFIRE ACTION PLAN

During High Fire Danger days in your area, monitor your local media for information on brush fires and be ready to implement your plan. Hot, dry and windy conditions create the perfect environment for a wildfire.

**Important Phone Numbers:**

Out-of-State Contact: \_\_\_\_\_ Phone: \_\_\_\_\_

Work: \_\_\_\_\_

School: \_\_\_\_\_

Other: \_\_\_\_\_

Evacuation Routes: \_\_\_\_\_

\_\_\_\_\_

\_\_\_\_\_

Where to go: \_\_\_\_\_

\_\_\_\_\_

Location of Emergency Supply Kit: \_\_\_\_\_

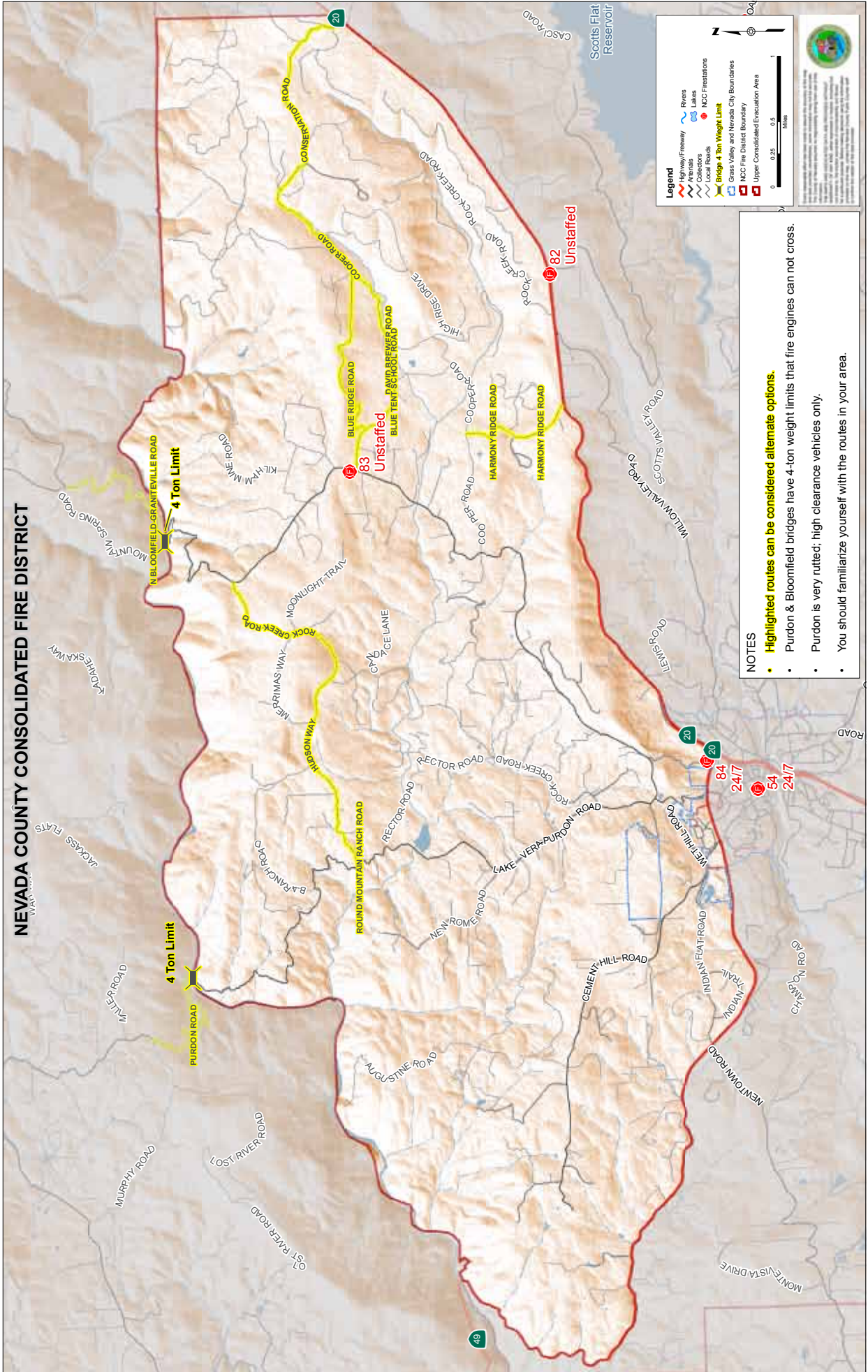
\_\_\_\_\_

Notes: \_\_\_\_\_

\_\_\_\_\_

\_\_\_\_\_

# NEVADA COUNTY CONSOLIDATED FIRE DISTRICT



- NOTES**
- **Highlighted routes can be considered alternate options.**
  - Purdon & Bloomfield bridges have 4-ton weight limits that fire engines can not cross.
  - Purdon is very rutted; high clearance vehicles only.
  - You should familiarize yourself with the routes in your area.

## Evacuation Order Checklist

Don't Become a Statistic!! Numerous civilians have died trying to evacuate too late and as we are all aware, Nevada County has the potential for numerous natural disasters that you should be prepared for. Wildland fires, significant winter storms, hazardous material releases or terrorism could affect us. This checklist is provided so you may prepare to evacuate, or in the event you become cut off from evacuation by fire or other circumstances, to shelter in place (see page 8.) Since emergency conditions can change rapidly, it is important that you **remain informed** as information may be your best tool to react to the situation present. Listen to local radio stations **KNCO 830 AM, STAR 94.1 FM, KVMR 89.5 or 101.5 FM** (Truckee) or access the internet at either [www.yubanet.com](http://www.yubanet.com) or [www.theunion.com](http://www.theunion.com).

**Secure Structure, People & Pets** (as time allows - refer to local emergency plans for additional information.)

Time Available	Priority	Task
<b>0-10 Minutes</b>	<b>1</b>	Load your Disaster Supplies Kit (medications, important documents, supplies and pets) into vehicle.
	<b>2</b>	Park car in driveway facing out with keys in ignition for a quick exit. Disconnect automatic garage door opener for emergency personnel access.
<b>10 Minutes to 1 Hour</b>	<b>3</b>	Close windows, vents, doors, venetian blinds or non-combustible window coverings and drapes.
	<b>4</b>	Shut off gas at the meter. Turn off propane tanks. (After fire threat passes call gas company to re-establish service if assistance is needed. Affix wrench to gas meter for quick access to shut off gas during an emergency.)
	<b>5</b>	Close fireplace screens and/or doors.
	<b>6</b>	Move flammable furniture, doormats, brooms and other flammable items into the center of the home away from windows and sliding glass doors.
	<b>7</b>	Turn on a light in each room to increase the visibility of your home in heavy smoke.
	<b>8</b>	Erect ladders against house and place fire-fighting tools (rake, shovel, chainsaw) in front of house.
	<b>9</b>	Place combustible patio furniture inside or at least 30 feet away from structure.
	<b>10</b>	Connect garden hoses to outside taps and sprinklers.
<b>1 Hour to 4 Hours</b>	<b>11</b>	Set up portable gasoline powered pump (if available.)
	<b>12</b>	If combustible materials are present, place lawn sprinklers on the roof and near above-ground fuel tanks and wet down.
	<b>13</b>	Wet or remove shrubs within 30 feet of home.
	<b>14</b>	Seal attic and ground vents with pre-cut plywood or heavy aluminum foil.
	<b>15</b>	Fill garbage cans and buckets with water and place in front of house.
	<b>16</b>	Protect water sources – wet down pump house, clear flammable vegetation away from supply infrastructure.
	<b>17</b>	Implement evacuation of livestock.

# FIRE ENTRAPMENT CHECKLIST

## Just Leave Early

You are strongly urged to evacuate when advised or if you are in doubt, just get out. Due to the unpredictability of fire there is always the possibility that you may become cut-off from an escape route and trapped at your home, so we have developed a guide that may help save your life.

Remember, one of the first things to go is electricity, so you won't have the garden hose to help you if you are on a well without a backup power supply.

Legally, you may stay and protect your home. However, your home should be very well prepared for wildfire. During a wildfire event, there will not be a fire engine available to protect every home. Defending your property from wildfire may take many hours of strenuous activity. You must be physically and emotionally able to provide for your safety during the emergency, but most people are not. You may be placed in a situation that demands you to stay due to the inability to safely evacuate.

1. **REMAIN CALM** – an approaching wildfire will be extremely loud, create extreme heat and smoke and likely evoke fear and panic as it reaches your home. The duration of the fire front varies by vegetation type and density. Generally, grassland vegetation environments typically burn for 10 minutes, brush lands for 20 minutes and timber for over an hour.
2. Before the fire front arrives, identify **SAFETY ZONES**. A simple definition of a **SAFETY ZONE** is: an area used for escaping a wildfire that is clear of flammable materials. Examples include irrigated pastures or golf courses, parking lots, large ponds and any other area that will not support combustion
3. Your home will serve as your primary **SHELTER** from the fire front.
4. **BEFORE** the fire arrives: dress in protective clothing (long sleeve cotton shirt, heavy pants, vibram soled boots, no synthetic clothing); shut all windows and doors to prevent smoke and flames from entering the house; move furniture away from windows to help prevent embers that enter the house through a broken window from igniting furniture inside of home; place a ladder next to home; fill bathtub and buckets for putting out small fires; cover your face with a cotton handkerchief to protect yourself from smoke inhalation; place wet blankets or towels around window and door edges inside the house to stop smoke and embers from entering.
5. **BEFORE** the fire arrives **OUTSIDE** the home: check water supplies around your home and fill any available containers; remove garden furniture, doormats and other loose items that could trap embers; hose down the structure and 30 feet of vegetation surrounding it; block downspouts and fill rain gutters with water; actively patrol your property for any embers blowing in from the fire front and extinguish with wet mops, buckets, backpack sprayers or fire pump; turn on your irrigation system if available; continue to monitor media outlets for updates on the fire.
6. **DURING** the fire: go inside the home when it becomes too hot to stay outside. The skin on your ears and hands will alert you that conditions have become too hot to survive outside. When you feel it has become too hot for you, go inside to take shelter. Take all fire fighting equipment inside with you, including hoses, rakes, shovels and water supplies. Stay inside your house while the fire front passes around the house and look out for burning embers landing inside the home. Extinguish any spot fires. Do not shelter in a part of your home that does not allow you to see the progress of the fire. If your home catches fire and you are unable to extinguish what has now become a structure fire – go outside onto burnt ground after the fire front has passed (or go to your auxiliary safety zone.) Keep well away from the radiant heat that is being generated from the structure fire. Do not return into the house for any reason.
7. **AFTER** the fire front has passed: continue to wear your personal protective clothing; after main fire front passes, go outside again as soon as it is safe; inspect the perimeter of the home to extinguish any spot fires; water down the outside of the home and vegetation; continue to look for small fires from burning embers for many hours after the fire front has passed.
8. **LOOK** for burning embers: inside and on the roof; under the floor boards; under house crawl spaces; on decks and patios; window ledges and door sills; roof lines and gutters; outdoor furniture; doormats; garden beds and mulch; wood piles; sheds or other outbuildings.
9. **COMMUNICATE** your status to your out of area contact so your family knows you are safe.

Work with your neighbors and your community to prepare for wildfire. It is not a matter of **IF** another **WILDFIRE** will happen in Nevada County, but rather **WHEN** it will strike. **Be prepared!**

---

## ITEMS TO TAKE

---

Each person must decide for himself or herself what items to gather according to any list depending upon the time given to evacuate.

### Family

- Photographs of all family members
- Pets (if advance warning, take to shelter)
- Pet ID tags, medications, leashes, food

### Documents

- House deed
- Marriage license
- Insurance papers-home, health
- Tax papers and legal documents
- Birth certificates and passports
- Drivers' licenses
- Personal Digital Assistant (PDA)
- Computer backup disks
- Computers (time permitting)

### Money

- Checking and Savings books
- Credit cards and cash
- Purse or Wallet

### Medications

- Prescriptions, Analgesics
- First-aid kit
- Prescription glasses, dentures, hearing aids

### Sentimental

- Gold, silver, and other valuable jewelry
- Family heirlooms
- Military decorations, pins, awards
- Photos, slides, movies, home videos
- Family Bible
- Irreplaceable keepsakes

### Food and Water (for 3-7 days - if time permits)

- Water (1 gallon per person & pet per day)
- Non-perishable, ready-to-eat food
- Pet food
- Manual can opener

### Toiletries (if time permits)

- Soap and towels
- Toothbrushes and toothpaste
- Shaving articles
- Sanitary devices

### Clothing (appropriate for the season)

- Change of clothes for each person (for 1-7 days)
- Coats or Jacket
- Gloves, scarves and hat
- Shoes and boots
- Change of underwear and sleepwear
- Infant supplies and toys

### Additional Items to Take (if time permits)

- Cell phones and chargers
- Reading material
- Recreational items
- Flashlights and extra batteries
- Portable radio and extra batteries
- Cameras and extra batteries
- Covered container to use as an emergency toilet

---

## IF AN EVACUATION IS ANNOUNCED

---

### HOW TO STAY INFORMED:

- Tune into local radio stations KNCO at 830 AM or STAR 94.1 FM or KVMR 89.5 FM (Nevada City Area) or 101.5 FM (Truckee Area). Also check the internet at [www.yubanet.com](http://www.yubanet.com) or [www.theunion.com](http://www.theunion.com).
- Listen for fire and law enforcement announcements in your neighborhood.
- Keep your home phone available for emergency evacuation information.
- NOAA Weather Radio All Hazards. The National Weather Service broadcasts official Weather Service warnings, watches, forecasts and other hazard information 24 hours a day, 7 days a week. To receive warnings specific to your area, a special "Weather Alert Radio" is required.
- Call CAL FIRE, Fire Information at (530) 823-4083 or the internet at: <http://cdfdata.fire.ca.gov/incidents/incidents>
- Call Dial 211. Toll Free phone number normally used for Health and Human Services, but may be utilized to disseminate essential emergency information during a disaster.

### STAY CALM. FOLLOW DIRECTIONS.

### STAY BEHIND ROADBLOCKS.

This Emergency Preparedness Guide and Evacuation Plan cannot predict all possible scenarios. Each incident is unique, presents different problems and requires different evacuation routes. You may be directed into green zones, such as irrigated pastures, golf courses, or orchards as a temporary measure for your protection. This makes it imperative that you listen to and follow directions. If you think it is time to go, you are probably correct.

### HOW YOU MAY BE NOTIFIED

Fire and law enforcement will do what they can to notify you of when to leave and where to go, but there is no possible way they can reach everyone. That is why it is imperative that you tune into local media for up to the minute information.

Nevada County utilizes an emergency notification system called "CityWatch". This system has the capability to quickly target a geographical area and contact residents at a rapid rate. In order to be notified via the county's CityWatch Emergency Notification System via your cell phone, Voice over IP (VoIP), cell phone text messaging, or personal email, residents of Nevada County will need to manually add their information. If you have a residential or business phone number utilizing AT&T or a local cable company, this phone number is already accessible via CityWatch as part of a public safety data base.

To assure your additional contact information is included, go to <http://www.mynevadacounty.com/oes/>

For additional information, contact the Nevada County Office of Emergency Services at [oes@co.nevada.ca.us](mailto:oes@co.nevada.ca.us) or 530-265-1515

As a large incident gets more organized, you will find some intersections staffed with barricades and officials providing traffic control. These personnel may be Red Cross (CERT members), sheriff volunteers or deputies, CHP, city police, county department of transportation personnel, or any number of other allied agencies. Please cooperate with these agency representatives.

# Keeping your property fire-safe

You can greatly reduce the possibility of losing your home to a wildfire by following these guidelines.

Small things can endanger your home in a big way. An ember landing on a pile of flammable material will quickly ignite. Spend a morning searching for, and getting rid of, those flammable little things outside your home. It will be much safer.

1. Keep your gutters and roof clean of leaves and pine needles.
2. Remove dry grass, brush, leaves, and pine needles around your home; replace with watered landscape vegetation, green lawn or landscape rock.
3. Clear all flammable materials from your deck, including brooms, stacked wood, and easily ignitable patio furniture. Also, enclose or board up the area under your deck to keep it from becoming a fuel bed for hot embers.
4. Keep woodpiles a distance of at least 10 feet or more from your home.
5. Use fine mesh screen (1/4 inch or less) to cover eaves, roof and foundation vents to prevent wind-blown embers from entering.
6. Inspect and clean your chimney every year. Trim away branches within ten feet.
7. If you have a propane tank remove any flammable materials within 10 feet of it and if possible, position it at least 30 feet from any structures.

## Defensible Space Zone

Your defensible space is the area 100-200 feet from your home or to your property line. This is the area where you've modified the landscaping to help your house survive a wildfire, and to greatly improve the odds of success for firefighters who are defending it. If your home is on a slope or subject to high winds, extend the distance of this zone to a minimum of 200 feet down slope, or to your property line if your home is in a brush or tree covered area.

Removing the native brush species and thinning out densely crowded smaller trees will reduce fire intensity and slow the spread of a fire moving toward your home.

## Ornamental Plantings

Landscaped, watered ornamental shrubs and trees are not as much of a fire threat and can be located wherever the homeowner wishes.

## Wildland Vegetation

- Trees with trunks greater than eight inches in diameter must be limbed up eight feet. Trees with trunks smaller than eight inches must be limbed up eight feet or 1/2 the tree height, spaced 20 feet apart and brush removed from underneath.
- Wildland brush (manzanita, mountain misery, etc.) must be removed or spaced 3 times the height of the plants (or small group).
- Keep grass mowed shorter than four inches.





Nevada County Consolidated Fire District  
11329 McCourtney Rd, Grass Valley, CA 95949  
(530) 273-3158

Web: [www.nccfire.com](http://www.nccfire.com) Email: [nccfire@nccfire.com](mailto:nccfire@nccfire.com)



American  
Red Cross

*Together, we can save a life*



This project was supported by Grant No. 2009-0019 awarded by the Office of Homeland Security (OHS), Office of Justice Programs.

Point of view, opinions, findings, and conclusions in this publication are those of the author and do not necessarily represent the official position of the Office of Justice Programs or of OHS.

OHS reserves a royalty-free Non-exclusive, and irrevocable license to reproduce, publish, and use these materials and to authorize others to do so.

